

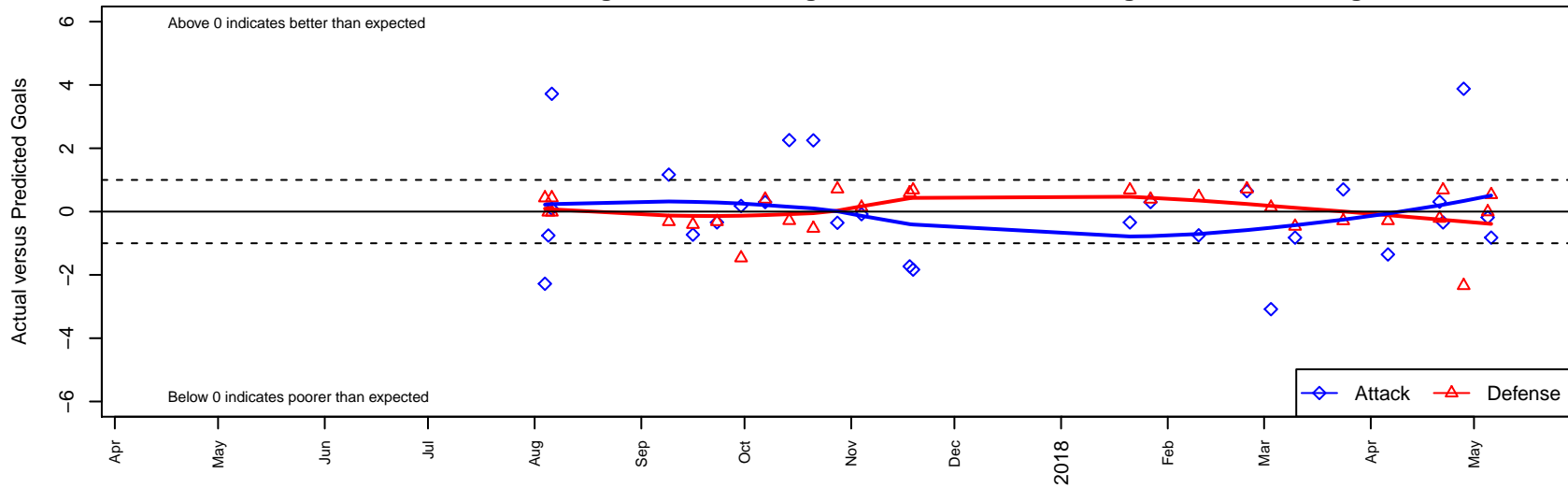
Bellevue United Robinson G04

Bellevue Youth SC
 Bellevue, WA
 G04 total strength=1346
 attack=7.39 defense=5.96
 fall league = RCL G04 Div 4
 notes= Robinson 2016

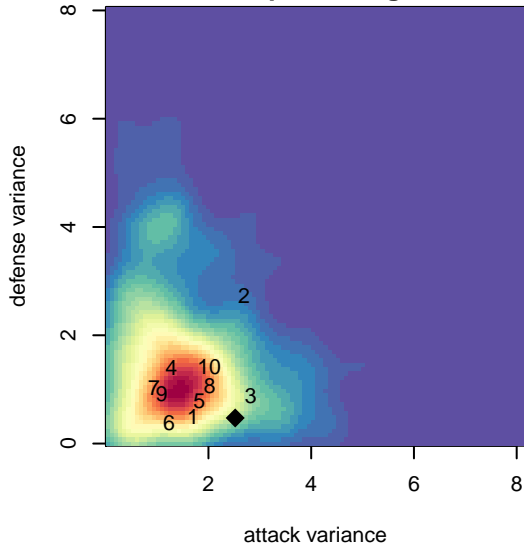
alt names used:
 Bellevue United FC G04 Robinson
 Bellevue United FC Robinson G04 – GU13
 Bellevue United FC Robinson G04 – GU13

Venues played:
 2017 Mt Hood Challenge U14 Silver
 2017 RCL G04 Div 4
 2017 WYS Presidents Cup G04 Division 2

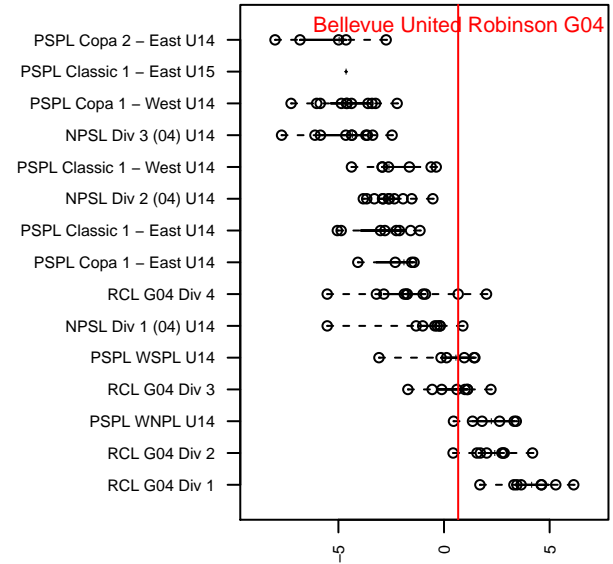
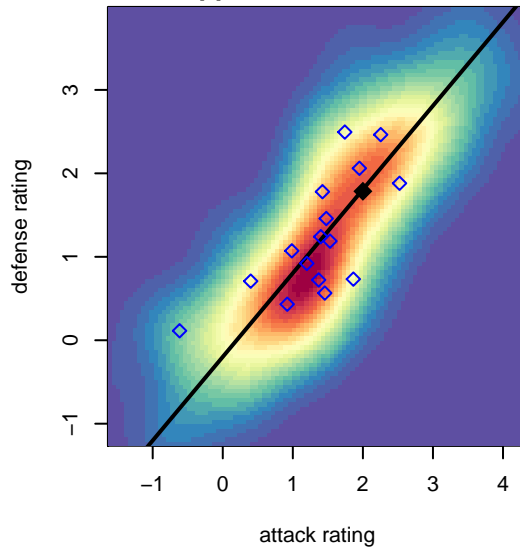
Bellevue United Robinson G04
 Dots are actual minus expected GF (blue circles) and GA (red triangles).
 Blue line is smoothed change in attack strength. Red is smoothed change in defense strength.



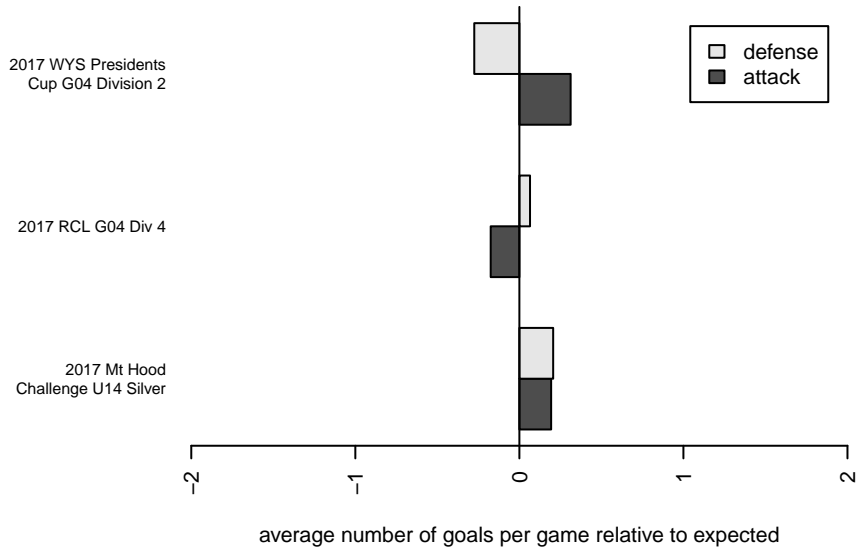
**attack and defense variance (black dot)
relative to other teams
and top 10 in region**



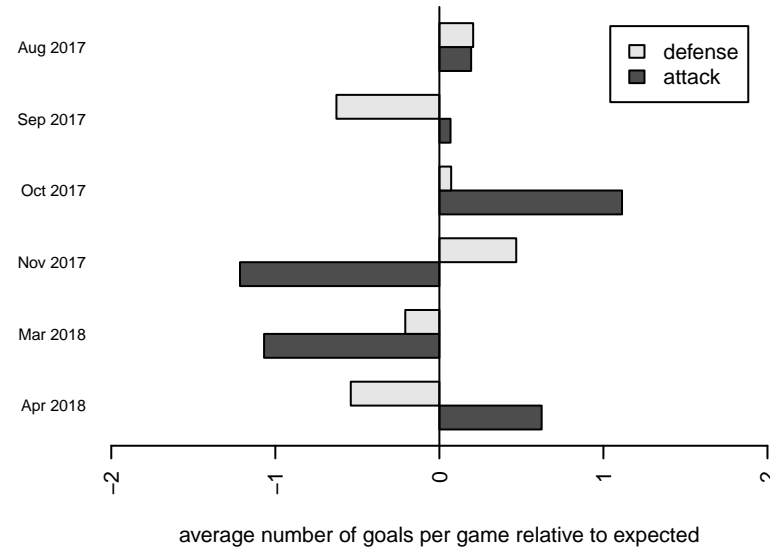
**attack and defense rating
relative to others at age
and all opponents in last 13 months**



Performance relative to 13 month average



Performance relative to 13 month average



| date | home | | away | | venue | pred.home | pred.away |
|-------------|------------------------------|---|-----------------------------------|---|--|------------------|------------------|
| :018-05-06 | SSC Shadow United Hall G04 | 1 | Bellevue United Robinson G04 | 0 | 2017 WYS Presidents Cup G04 Division 2 | 1.53 | 0.82 |
| :018-05-05 | Bellevue United Robinson G04 | 1 | WPFC Black G04 | 1 | 2017 WYS Presidents Cup G04 Division 2 | 1.18 | 0.99 |
| :018-04-28 | Bellevue United Robinson G04 | 5 | GS Surf B G04 | 4 | 2017 WYS Presidents Cup G04 Division 2 | 1.12 | 1.66 |
| :018-04-22 | Bellevue United Robinson G04 | 2 | PacNW White G04 | 0 | 2017 WYS Presidents Cup G04 Division 2 | 2.34 | 0.68 |
| :018-04-21 | Snohomish United Black G04 | 1 | Bellevue United Robinson G04 | 2 | 2017 WYS Presidents Cup G04 Division 2 | 0.79 | 1.69 |
| :018-04-06 | Bellevue United Robinson G04 | 1 | Eastside FC Blue G04 | 1 | 2017 WYS Presidents Cup G04 Division 2 | 2.35 | 0.71 |
| :018-03-24 | FME Fusion G04 | 1 | Bellevue United Robinson G04 | 2 | 2017 WYS Presidents Cup G04 Division 2 | 0.71 | 1.30 |
| :018-03-10 | SSC Shadow United Hall G04 | 2 | Bellevue United Robinson G04 | 0 | 2017 RCL G04 Div 4 | 1.53 | 0.82 |
| :018-03-03 | Bellevue United Robinson G04 | 3 | GS Surf C G04 | 0 | 2017 RCL G04 Div 4 | 6.08 | 0.13 |
| :018-02-24 | Eastside FC Blue G04 | 0 | Bellevue United Robinson G04 | 3 | 2017 RCL G04 Div 4 | 0.71 | 2.35 |
| :018-02-10 | Bellevue United Robinson G04 | 4 | Kitsap Alliance Black G04 | 0 | 2017 RCL G04 Div 4 | 4.75 | 0.47 |
| :018-01-27 | Bellevue United Robinson G04 | 4 | Harbor Premier White G04 | 0 | 2017 RCL G04 Div 4 | 3.70 | 0.39 |
| :018-01-21 | Bellevue United Robinson G04 | 2 | PacNW White G04 | 0 | 2017 RCL G04 Div 4 | 2.34 | 0.68 |
| :017-11-19 | Bellevue United Robinson G04 | 2 | Blackhills FC Black G04 | 0 | 2017 RCL G04 Div 4 | 3.83 | 0.68 |
| :017-11-18 | Whatcom FC Rangers Blue G04 | 0 | Bellevue United Robinson G04 | 1 | 2017 RCL G04 Div 4 | 0.59 | 2.73 |
| :017-11-04 | GS Surf C G04 | 0 | Bellevue United Robinson G04 | 6 | 2017 RCL G04 Div 4 | 0.13 | 6.08 |
| :017-10-28 | Bellevue United Robinson G04 | 2 | Eastside FC Blue G04 | 0 | 2017 RCL G04 Div 4 | 2.35 | 0.71 |
| :017-10-21 | Kitsap Alliance Black G04 | 1 | Bellevue United Robinson G04 | 7 | 2017 RCL G04 Div 4 | 0.47 | 4.75 |
| :017-10-14 | Bellevue United Robinson G04 | 5 | RV Slammers Orange G04 | 1 | 2017 RCL G04 Div 4 | 2.74 | 0.72 |
| :017-10-07 | Harbor Premier White G04 | 0 | Bellevue United Robinson G04 | 4 | 2017 RCL G04 Div 4 | 0.39 | 3.70 |
| :017-09-30 | Bellevue United Robinson G04 | 1 | SSC Shadow United Hall G04 | 3 | 2017 RCL G04 Div 4 | 0.82 | 1.53 |
| :017-09-23 | PacNW White G04 | 1 | Bellevue United Robinson G04 | 2 | 2017 RCL G04 Div 4 | 0.68 | 2.34 |
| :017-09-16 | Bellevue United Robinson G04 | 2 | Whatcom FC Rangers Blue G04 | 1 | 2017 RCL G04 Div 4 | 2.73 | 0.59 |
| :017-09-09 | Blackhills FC Black G04 | 1 | Bellevue United Robinson G04 | 5 | 2017 RCL G04 Div 4 | 0.68 | 3.83 |
| :017-08-06 | Bellevue United Robinson G04 | 4 | Oregon Trail SC Fury G04 | 1 | 2017 Mt Hood Challenge U14 Silver | 3.91 | 0.98 |
| :017-08-06 | Bellevue United Robinson G04 | 7 | Crossfire OR LOSC Blue I G04 | 0 | 2017 Mt Hood Challenge U14 Silver | 3.28 | 0.43 |
| :017-08-05 | Bellevue United Robinson G04 | 0 | FC Salmon Creek Nemesis White G04 | 1 | 2017 Mt Hood Challenge U14 Silver | 0.76 | 0.98 |
| :017-08-04 | Crossfire OR LOSC Blue I G04 | 0 | Bellevue United Robinson G04 | 1 | 2017 Mt Hood Challenge U14 Silver | 0.43 | 3.28 |